



ROYAL PRINCE EDWARD YACHT CLUB SAILING INSTRUCTIONS (SIs)



Couta Boat & E30 Regatta Incorporating the Thistle Cup

5 November 2021

1. RULES

- 1.1. The event is governed by the rules as defined in the Racing Rules of Sailing and the Special Regulations of Australian Sailing applicable to Category 7 races.
- 1.2 Rules 44.1 and 44.2 are changed so that only a part-turn is required:
 - a) On a leg to a windward mark, a part-turn is a gybe and luffing to a close-hauled course as soon as reasonably possible.
 - b) On other legs a part-turn is a tack and bearing away as soon as reasonably possible to more than 90 degrees from the true win
RRS 44.3 shall not apply.

2. CHANGES TO SAILING INSTRUCTIONS

- 2.1 Any changes to the sailing instructions will be posted before 10:00 hours on the day it will take effect, except that any change to the schedule of races will be posted by 1800 on the day before it will take effect.

3. COMMUNICATION WITH COMPETITORS

- 3.1 Notices to competitors will be posted on the official noticeboard located at RPEYC. Notices may also be made available to competitors on the club's website at, www.rpeyc.com.au .
- 3.2 The list of entries will be placed on the RPEYC website and notice board no later than two hours before the start of each race.
- 3.3 The race office contact details are:
RPEYC email: sailing@rpeyc.com.au
Telephone: (02)9363 5809 – Tuesday, Wednesday & Thursday
Race Day Mobile: 0499 227 413 (race day only)
- 3.4 The race committee intends to monitor and communicate with competitors on VHF radio channel 73.
- 3.5 While racing, except in an emergency, a boat shall not make voice or data transmissions and shall not receive voice or data communication that is not available to all boats.

4. SCHEDULE OF RACES

- 4.1 Racing will be conducted on Friday 5th November 2021
- 4.2 Races abandoned will not be re-sailed.

5. STARTING SIGNALS AND TIMES (Changes Rule 26)

- 5.1 1255 – Preparatory Signal E30 Division. The class flag for the E30 Division will be code flag E.
- 5.2 1300 – Start signal for E30 Division and warning for Couta Boat Division. The class flag for the Couta Boat Division will be code flag C.
- 5.3 1305 – Start signal for Couta Boat Division.

6. RACING AREA

RPEYC Couta and E30 2021– SI – V0

6.1 Racing shall be conducted on Sydney Harbour.

7. COURSES

7.1 Courses are described in Appendix 1.

8. SHORTENED COURSES

8.1 The course for either Division may be shortened in accordance with RRS 32.

9. MARKS

9.1 Marks are described in Appendix 2.

10. OBSTRUCTIONS

10.1 Cardinal marks – boats shall not sail within the areas bounded by Cardinal Marks.

10.2 Moorings – except for naval moorings, boats shall not sail within mooring areas.

10.3 Shark Island – boats shall not sail between the AS Shark Mark (SM) and the Cardinal Mark south of Shark Island or between Shark Island and the Shark Island Light (north of Shark Island).

10.4 Garden Island and Chowder Bay – boats shall not sail within the yellow markers in the vicinity of Garden Island or near the naval wharf in Chowder Bay.

11. THE START

11.1 The starting line will be between a staff displaying an orange flag on the race committee vessel and the course side of a red inflatable mark.

11.2 Boats whose warning signal has not been made shall keep clear of the starting area.

11.3 Individual or general recalls shall be made in accordance with RRS29

12. THE FINISH

12.1 The finishing line will be between the staff displaying an orange flag on the committee vessel and the course side of a red inflatable mark.

13. TIME LIMIT

14.1 The absolute time limit for all races will be 90 minutes for each race. Any boat finishing after this time will be scored Did Not Finish (DNF).

15. PROTESTS AND REQUESTS FOR REDRESS

15.1 Protests are to be lodged, in accordance with RRS 61, at the RPEYC Race Office or by email at sailing@rpeyc.com.au by 1800 on the day of the event.

15.2 Protests will be heard at the RPEYC club house on the following Wednesday unless otherwise decided by the Protest Committee.

16. ARBITRATION

16.1 Arbitration may take place in accordance with RRS Appendix T.

17. RETIREMENT

17.1 Yachts that retire from the race shall contact the club on VHF 73 or phone 0499 227 413 within the race time limit. Yachts failing to do so maybe scored DNE. This changes RRS 63.1 & A5.

18. SKIPPERS BRIEFING

18.1 Each nominated helmsman of a boat entered shall have attended a safety briefing held by a yacht club located on Sydney Harbour for the current sailing season. Entries will not be accepted for any race or the series without a declaration by the person who signs or authorises the entry that every nominated helmsman has attended a safety briefing session.

19. COVID REQUIREMENTS

19.1 It is the responsibility of owners and skippers to ensure that they have read, understood, and comply with the RPEYC COVID protocols including but not limited to hygiene, distancing and crew recording and tracing requirements. All boats are required to enter crew contact details (including the skipper) in the SailSys race management system, or to the RPEYC office, by 1000 on the day the boat intends to race. Boats not complying with this requirement will be scored DNC. This changes RRS 63.1 & A5.

20. SAFETY REGULATIONS

20.1 Boats shall comply with the following regarding commercial shipping.

- (a) Boats shall not pass between the bow of any Seagoing Ship and a dedicated Ports Authority escort vessel whilst on escort duty and within 500 metres from the bow and 30 metres from the side or stern of the Seagoing Ship.
 - (b) Boats shall maintain a minimum distance of 200 metres from the bow, and 30 metres from the sides or stern of any ferry displaying the Orange Diamond.
 - (c) Boats must abide by traffic directions of NSW RMS Boating Service Officers. Any yacht directed to stop or alter course by NSW RMS Boating Service Officers because of an anticipated breach of the above rules, incident/collision or complaint shall do so immediately.
 - (d) Boats reported by NSW RMS as having contravened NSW RMS regulations shall be scored DNE without a hearing. This changes 63.1 & A5.
- 20.2 Boats shall report any incident involving injury or Significant Damage likely to cost more than \$5,000 to the race committee at the first reasonable opportunity.

APPENDIX 1 – Courses

Boats are to proceed to all marks named in the course in the order shown and are to be rounded to starboard. Mark locations are indicated in Appendix 2

The course to be sailed will be signalled with or before the warning signal and indicated by the appropriate numeral pennant.

Any Course may be shortened in accordance with RRS 32.

Course Descriptions:

E30 Division

Course 1	Course 2	Course 3
Start vicinity of Point Piper	Start vicinity NE Shark Island	Start vicinity of Point Piper
EC AS Buoy Eastern Channel SM AS Buoy Shark Island PP AS Buoy Point Piper EC AS Buoy Eastern Channel	RB AS Buoy Rose Bay SM AS Buoy Shark Island CB AS Buoy Chowder Bay RB AS Buoy Rose Bay SM AS Buoy Shark Island CB AS Buoy Chowder Bay	N2 Naval Mark #2 N3 Naval Mark #3 RB AS Buoy Rose Bay N2 Naval Mark #2 N3 Naval Mark #3 RB AS Buoy Rose Bay
Finish vicinity of Point Piper	Finish vicinity of NE Shark Is	Finish vicinity of Point Piper
Length approximately 5.7 nm	Length approximately 5.5 nm	Length approximately 5.7 nm

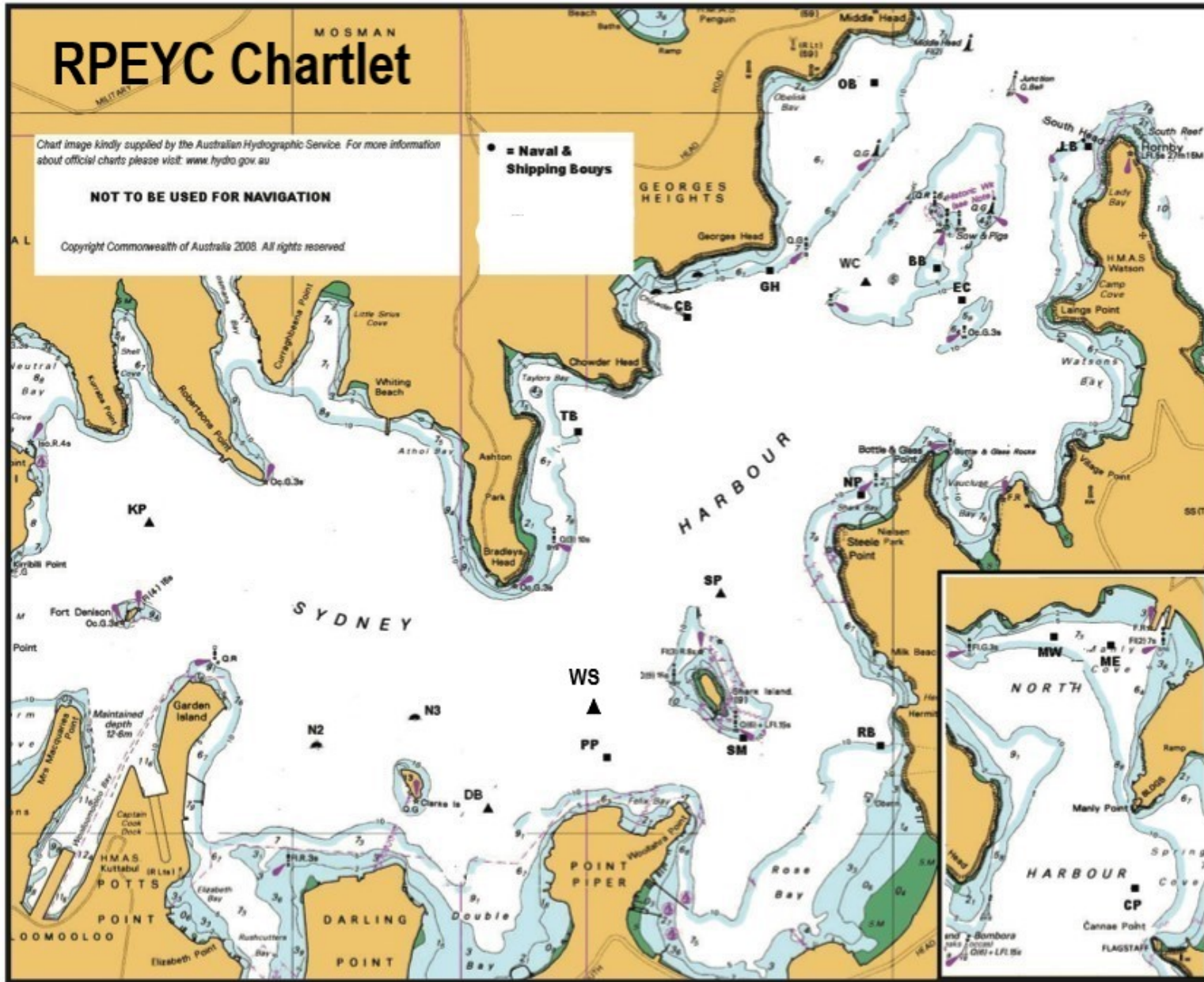
Couta Boat Division

Course 1	Course 2	Course 3
Start vicinity of Point Piper	Start vicinity NE Shark Island	Start vicinity of Point Piper
NP AS Buoy Nielsen Park SM AS Buoy Shark Island PP AS Buoy Point Piper Shark Island Light House North SM AS Buoy Shark Island PP AS Buoy Point Piper NP AS Buoy Nielsen Park	SM AS Buoy Shark Island CB AS Buoy Chowder Bay SM AS Buoy Shark Island CB AS Buoy Chowder Bay	N2 Naval Mark #2 N3 Naval Mark #3 SM AS Buoy Shark Island N2 Naval Mark #2 N3 Naval Mark #3 SM AS Buoy Shark Island
Finish vicinity of Point Piper	Finish vicinity of NE Shark Is	Finish vicinity of Point Piper
Length approximately 4.7 nm	Length approximately 4.6 nm	Length approximately 4.6 nm

Appendix 2 - Mark Descriptions and Chartlet

Mark Descriptions	Emergency Contact Details:
BB - Beashel Mark - AS buoy, south west of Sow and Pigs	
CB - Chowder Bay Mark - AS buoy off southern shore of Chowder Bay (the southernmost buoy of the two SA buoys in Chowder Bay)	
DB - Double Bay Mark - Red inflatable RPEYC mark between Point Piper and Clarke Island.	Medical Emergency 000
EC – Eastern Channel Mark – AS buoy approx. 100m west of the Eastern Channel Pile Light.	Marine Rescue 9450 2468
KP1 - Kirribilli Mark 1 - orange inflatable mark with the lettering RSYS east of Kirribilli Point	VHF Ch 16
KP2 - Kirribilli Mark 2 - orange inflatable mark with the lettering RSYS, approximately 100 metres south of KP1.	Water Police 9320 7499
LB - Lady Bay Mark – AS buoy off northern end of Lady Bay	RMS 13 12 36
N2 - Naval Buoy No.2 – Approximately 250m NW of Clarke Island	Medical Evacuation Locations:
N3 - Naval Buoy No. 3 – Approximately 200m North of Clarke Island	Rose Bay Wharf
NP - Nielsen Park Mark – AS buoy 200m north of Steele Point	Taronga Zoo Wharf
OB - Obelisk Bay Mark - AS buoy E of Obelisk Bay	
PP – Point Piper Mark – AS buoy north of Point Piper.	
RB – Rose Bay Mark – AS buoy approximately 200m off the eastern shore of Rose Bay, in front of the convent.	
SM – Shark Island Mark - AS buoy approximately 30 metres south-east of the South Cardinal mark at Shark Island, passing Shark Island to starboard	
TB - Taylor Bay Mark - AS buoy in the middle of Taylor Bay	
WS - West of Shark Mark – Red inflatable RPEYC mark near Point Piper	

NOTE: AS buoys referred to in these instructions may be a yellow spherical, cylindrical or spar shape buoys and may be replaced with a different mark without warning.



RPEYC Couta and E30 2021-SI - V0